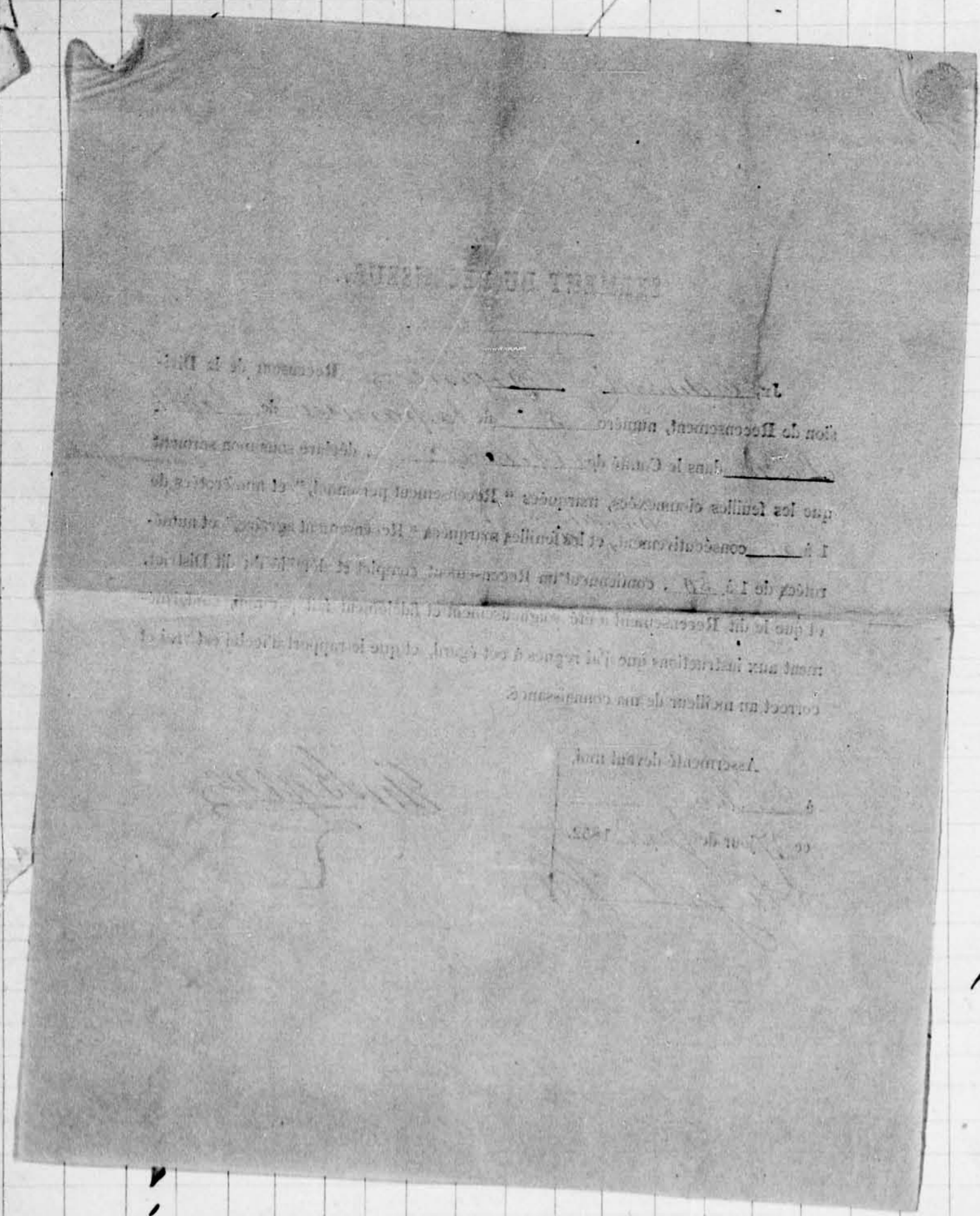


*St. Roch* IN THE COUNTY OF *Durbin* COMPRISING

Married or Single.	Colored persons—Negroes.	Indians if any.	Residents.		Deaf & Dumb.	Blind.	Lunatics.	Attending School.	Deaths during year 1851.													
			Members.						M	F	M	F										
			M	F																		
9	10	11	12	13	14	15	16	17	18	19	20	21	22	23	24	25	26	27	28	29	30	

24 25



**PERS** *Parish known as Sautery of Durbin OF THE SAID Parish* 2

Brick, Stone, Frame, Log, Shanty, or other kind of residence.	Houses.				Shops, Stores, Inns, Taverns, &c.	Public Buildings.	Places of Worship.
	No. of Stories.	No. of families occupying	Vacant.	Building.			
31	32	33	34	35	36	37	38
<i>Frame House</i>	<i>1</i>	<i>1</i>					
<i>Frame House</i>	<i>1</i>	<i>2</i>					
<i>Frame House</i>	<i>1</i>	<i>1</i>					
<i>Frame House</i>	<i>1</i>	<i>1</i>					
<i>Frame House</i>	<i>1</i>	<i>2</i>					
<i>Frame House</i>	<i>1</i>	<i>1</i>					

1 year census